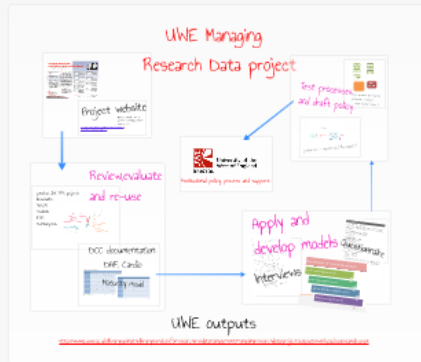


## University of the West of England Managing Research Data project

- JISC Managing Research Data Programme 2011-13
  - 27 large institutional projects - Infrastructures, policies and guidance materials for research data management.
- Pilot working with 7 research projects in health & life sciences
- Service based approach
- Not research intensive



### Re-skilling for Research report (January 2012)

<http://www.ukoln.ac.uk/content/re-skilling-research>

UKOLN Re-skilling for Research

UKOLN - The UK's National Academic Research Training & Support Conference  
Julian Thomas (UKOLN) - Why is the library leading on RDM? Research Data Management and Archiving Strategy

Managing repositories: Manage information and understand targets

Central function: identify common themes & needs, wide view

Building solutions to establish information needs

Understand creation and preservation

### Why librarians?

The Librarian's role is changing

- Evolutionary process
- Services awareness of the needs of the research community
  - Move to Research Fit for
  - Move to Research Fit for
  - New researcher responsibility for what
  - Move to a data structure oriented researcher will not create digital

Long term sustainable service

Collaborative working - researchers, IT services, research office/administration

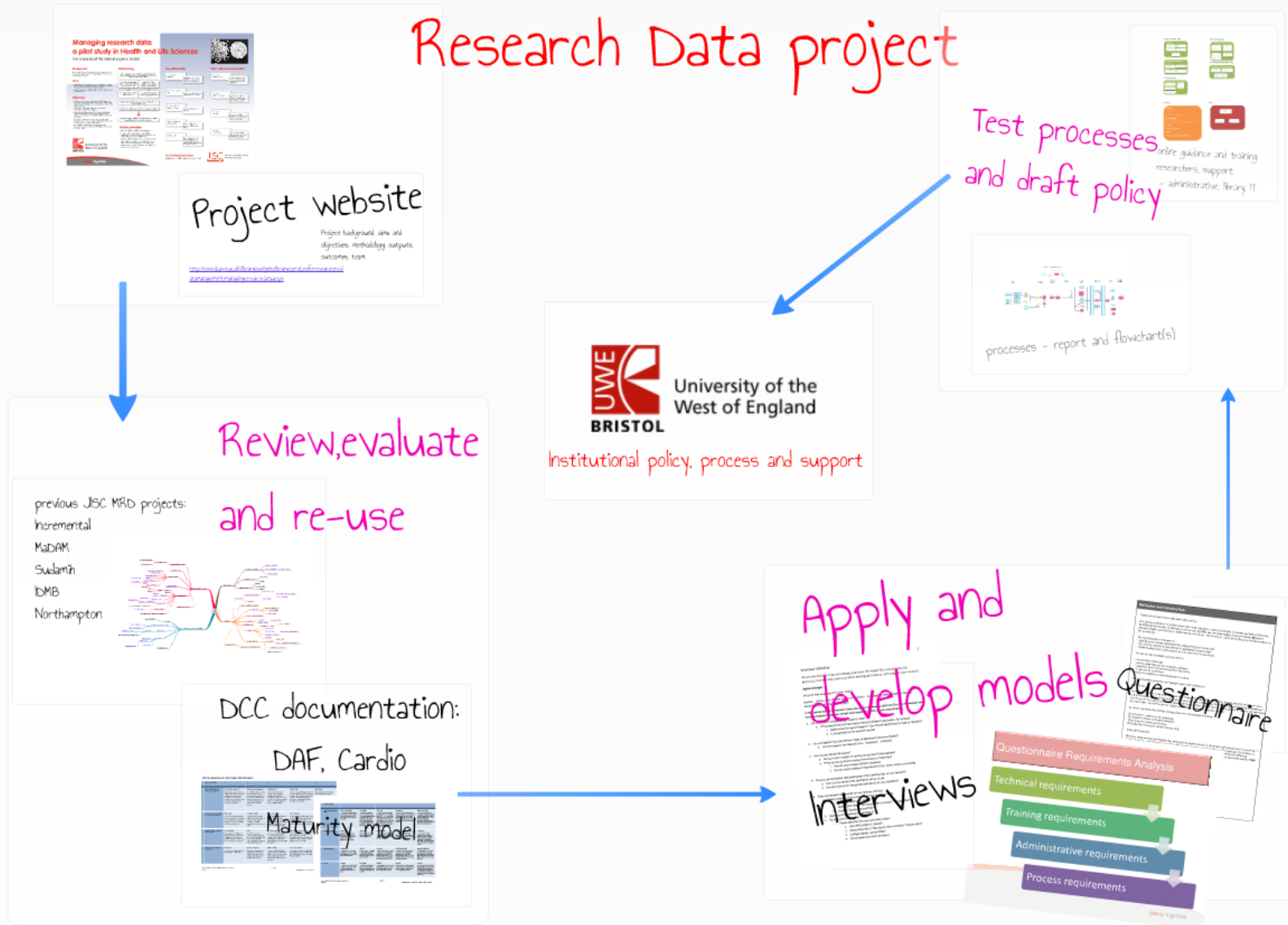


# University of the West of England Managing Research Data project

- JISC Managing Research Data Programme 2011-13
  - 17 large institutional projects - infrastructures, policies and guidance materials for research data management.
- Pilot working with 7 research projects in health & life sciences
- Service based approach
- Not research intensive

# UWE Managing

# Research Data project



UWE outputs

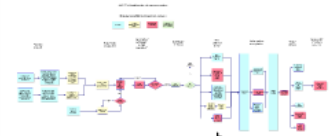
<http://www1.uwe.ac.uk/library/usingthelibrary/servicesforresearchers/datamanagement/managingresearchdata/projectoutputs/workpackages1and2.aspx>

# Review, evaluate and re-use

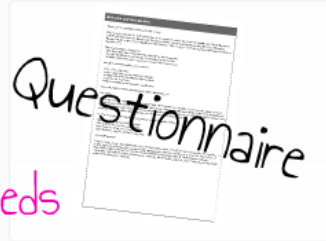
previous JISC MRD projects:  
 Incremental  
 MaDAM  
 Sudamih  
 IDMB  
 Northampton



# Process workflows



processes - report and flowchart(s)



Questionnaire

Establishing user needs  
 - reference interview



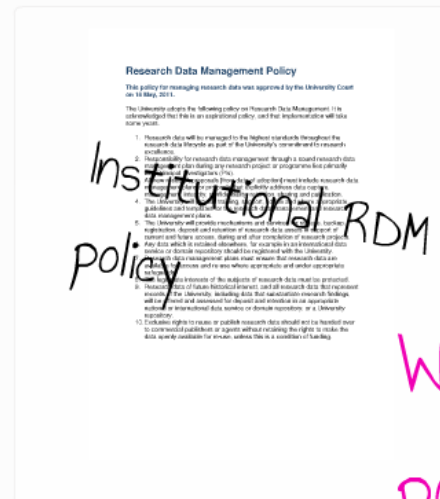
Interviews

# What have I done as a librarian?



online guidance and training  
 researchers, support  
 - administrative, library, IT

Design training



Institutional RDM  
 policy

Write  
 policy

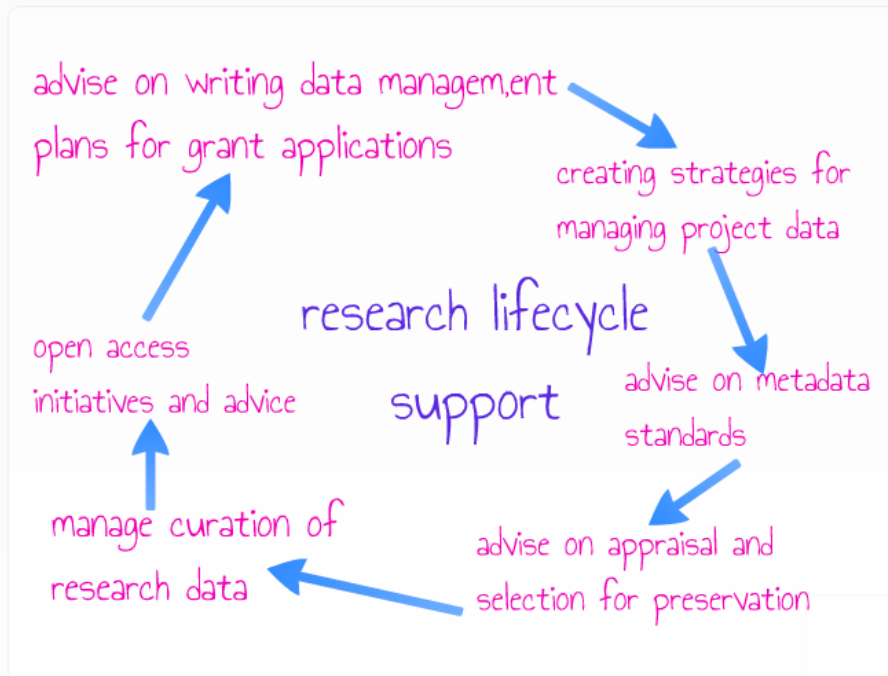
## Research Data Management Policy

This policy for managing research data was approved by the University Council on 10 May, 2011.

The University retains the following policy on Research Data Management. It is acknowledged that this is an aspirational policy, and that implementation will take time to achieve.

1. Research data will be managed to the highest standards throughout the research data lifecycle as part of the University's commitment to research excellence.
2. Responsibility for research data management through a named research data manager will be assigned to research units or programmes that currently manage research data. The University will provide training and support to research data managers to ensure they are equipped to manage research data in accordance with the University's research data management policy.
3. The University will provide mechanisms and resources to support research data management and retention of research data in accordance with the University's research data management policy. For example, in a research data lifecycle, the University will provide training and support for research data managers to ensure that research data is managed in a secure and safe manner, and that research data is accessible to researchers and other stakeholders.
4. Research data of the subjects of research data must be protected.
5. Research data of the subjects of research data must be protected in accordance with the University's research data management policy. Research data of the subjects of research data must be protected in accordance with the University's research data management policy.
6. Research data of the subjects of research data must be protected in accordance with the University's research data management policy.
7. Research data of the subjects of research data must be protected in accordance with the University's research data management policy.
8. Research data of the subjects of research data must be protected in accordance with the University's research data management policy.
9. Research data of the subjects of research data must be protected in accordance with the University's research data management policy.
10. Research data of the subjects of research data must be protected in accordance with the University's research data management policy.

# RDM - librarian roles



Advise on managing and organising 'research data deluge'

Managing information as well as finding it

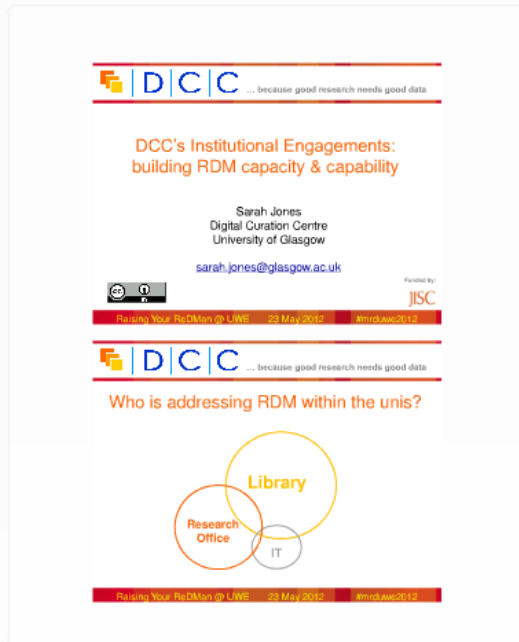
Researchers - another community requiring support?

## Training

- Who for?
  - Researchers
  - Professional Services Staff
- What form should training take?
  - One-to-one sessions
  - Workshops
  - Presentations
  - Online modules
- What should be included in the training?
  - Data Management Plans
  - Organising research material
  - File and Document Management e.g. versioning
  - Ethical and confidentiality issues
  - Bibliographic Software
  - Institutional Repositories and Open Access

# Re-skilling for Research report (January 2012)

<http://www.rluk.ac.uk/content/re-skilling-research>



The slide features the DCC logo at the top with the tagline "... because good research needs good data". The main title is "DCC's Institutional Engagements: building RDM capacity & capability". The presenter is Sarah Jones, Digital Curation Centre, University of Glasgow, with email sarah.jones@glasgow.ac.uk. It is presented by JISC. The event is "Raising Your RDM Man @ UWE" on 23 May 2012. A Venn diagram at the bottom shows three overlapping circles labeled "Library", "Research Office", and "IT".

DARTS 3 - The Third Discover Academic Research, Training & Support Conference  
Judith Stewart (UWE, Bristol) - 'Why is the Library leading on this?': Research Data Management and university libraries.

- Managing repositories
- Central Service: identify common themes & needs, wider view
- Manage information and understand dangers
- Asking questions to establish information needs
- Understand curation and preservation

## Why librarians?

Long term sustainable service

Collaborative working - researchers, IT services, research office/administration,

### The Librarian's role is changing



- Evolutionary process
- Increased awareness of the needs of the research community
  - How do librarians fit in?
  - Where do librarians fit in?
  - Who should have responsibility for what?
  - Need for a clear structure otherwise researchers will not become engaged